



Retirement Community

3 PAGET HOUSE
UPTON LANE

£410,000





DESCRIPTION

Well-Presented 2-Bedroom Ground Floor Apartment –
Grove Place Retirement Village

Located within the sought-after Grove Place Retirement Village, this beautifully maintained two-bedroom ground floor apartment offers comfortable and stylish living for the over-60s.

The open-plan lounge, dining, and kitchen area is bright and welcoming, with direct access to a spacious patio terrace—perfect for outdoor dining or relaxing with a morning coffee.

The master bedroom features generous fitted wardrobes and benefits from a private en-suite shower room, while the second bedroom—ideal as a guest room or study—also includes built-in storage. A modern main bathroom with a white suite completes the accommodation.

This delightful apartment offers convenient, low-maintenance living in a vibrant and supportive retirement community. Contact us today to arrange a viewing.

PROPERTY FEATURES

- Ground Floor
 - Private Patio
 - Fitted Wardrobes
 - Modern Kitchen
 - “Service Charges and Deferred Membership Fees Apply”
 - Onsite Restaurant
 - Social Clubs/Events
 - Established Community
 - Shuttle Service
 - Pet Friendly
- 





SOCIAL OPPORTUNITIES



HOTEL INSPIRED FACILITIES



CONCIERGE & MAINTENANCE



PET FRIENDLY

KEY FINANCIAL TERMS

A service charge applies, along with a deferred membership fee payable upon resale of the property. Full details can be found in the Key Financial Terms on our website. No ground rent is charged by the landlord.





PROPERTY DETAILS

Inside Area	821 sqft
-------------	----------

Private Patio	Ground Floor
---------------	--------------

Views	North Facing
-------	--------------

Bedrooms	2
----------	---

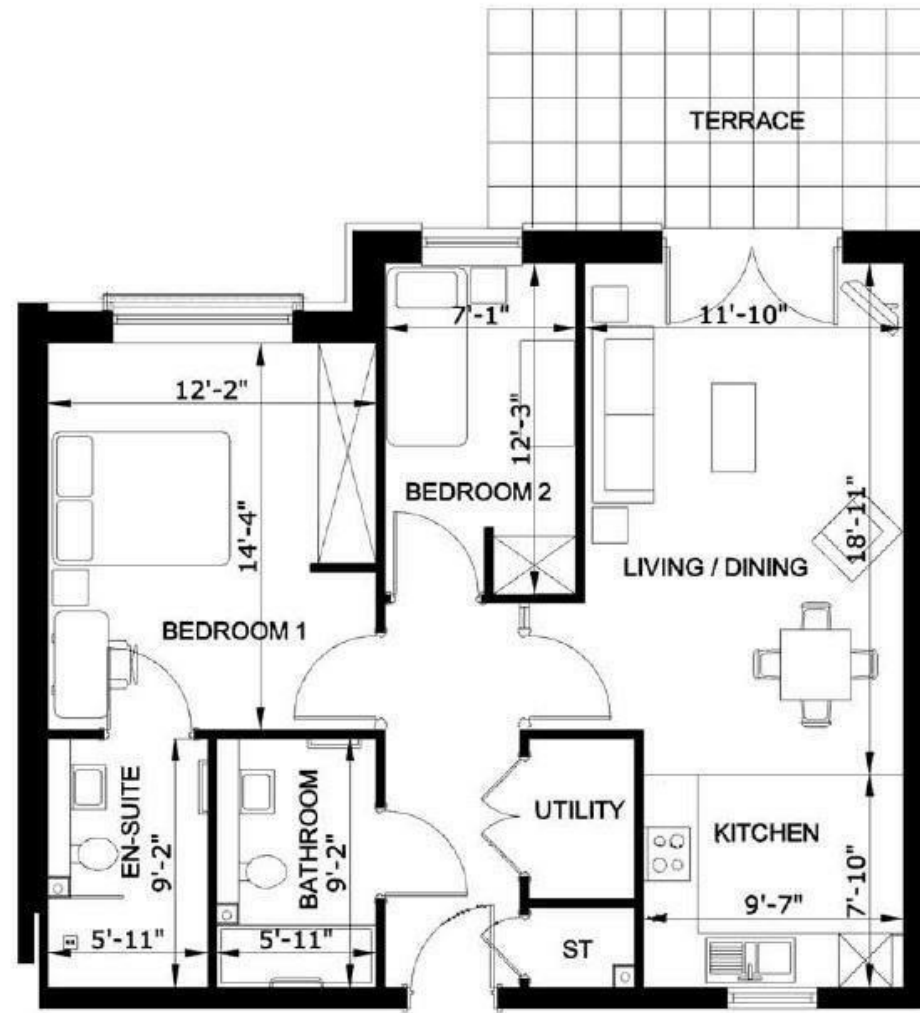
Bathrooms	2
-----------	---

EPC	C
-----	---

Council tax band	D
------------------	---

Guide price	£410,000
-------------	----------

Ownership	Leasehold
-----------	-----------



Floor plans and dimensions are intended to provide information on the layout and approximate measurements of the property. The furnishings shown in the images are courtesy of a virtual staging app or staged and are used for illustrative purposes only. No furnishings shall be included as part of the property offered for sale. All images, photographs dimensions, and floor plans are not intended to be relied upon for, nor to form part of, any contract.



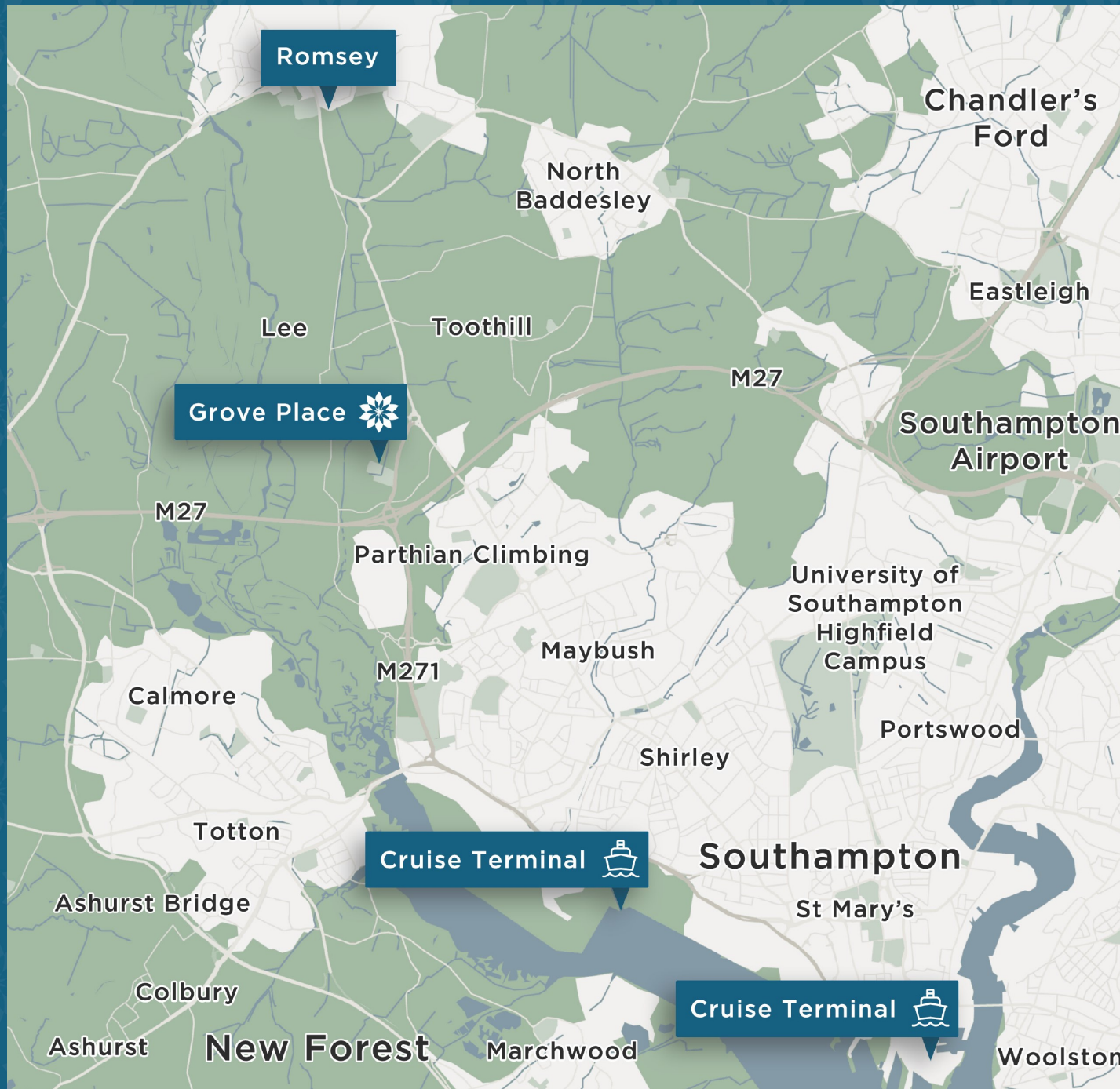
FULL LIST OF EXCLUSIVE FACILITIES

- › Private patio/balcony
- › Library
- › Lounge
- › Swimming pool
- › Spa pool
- › Gymnasium
- › Snooker room
- › Guest apartment
- › Music and hobby communal rooms
- › Garden games
- › Croquet
- › Green woodland and Bluebell walk

FULL LIST OF SERVICES

- › Concierge services
 - › Restaurant & private dining facility
 - › Coffee lounge & bar
 - › Mini bus service
 - › Domiciliary care
 - › Hairdressing salon
 - › Housekeeping
 - › Laundry
 - › Maintenance
- 





Grove Place is set within 27 acres of glorious grounds, including its own kitchen garden, croquet lawn, and meadows. Residents enjoy private living with the option of onsite care, available now or in the future.

At the heart of Grove Place is a 16th-century, Grade I listed Manor House—a magnificent building housing stunning communal facilities. Elaborate ceilings and stone fireplaces create the perfect setting for the residents' lounge, bar, billiards room, and library.

In the magnificent oak-paneled restaurant, our chef and his team prepare fresh meals daily, with packages tailored to personal preferences.

Grove Place's facilities are exclusively for residents, their friends, and family.

DIRECTIONS

Grove Place enjoys an elevated position near the River Test. The grand avenue leading to the Manor House is accessible from Upton Lane, Nursling. This prime location offers excellent road links to the M27 via M271 Junction 3, connecting Southampton City Centre to the south and Romsey to the north. The New Forest National Park and coastal towns like Lymington and Bournemouth are also within easy reach.

CONTACT GROVE PLACE

Angela Roberts | Sales & Marketing Manager



+44 (0)2380 743592



aroberts@groveplacevillage.co.uk



+44 (0)7824 487138



www.groveplacevillage.co.uk



APPROVED
OPERATOR

We are both a founding and leading member of the industry association, ARCO (Associated Retirement Community Operators), which promotes retirement communities for older people. We are an Approved Operator under the ARCO Consumer Code. We aim to meet and exceed their standards of service and compliance and are constantly striving to drive the retirement community industry to higher levels of quality and probity.